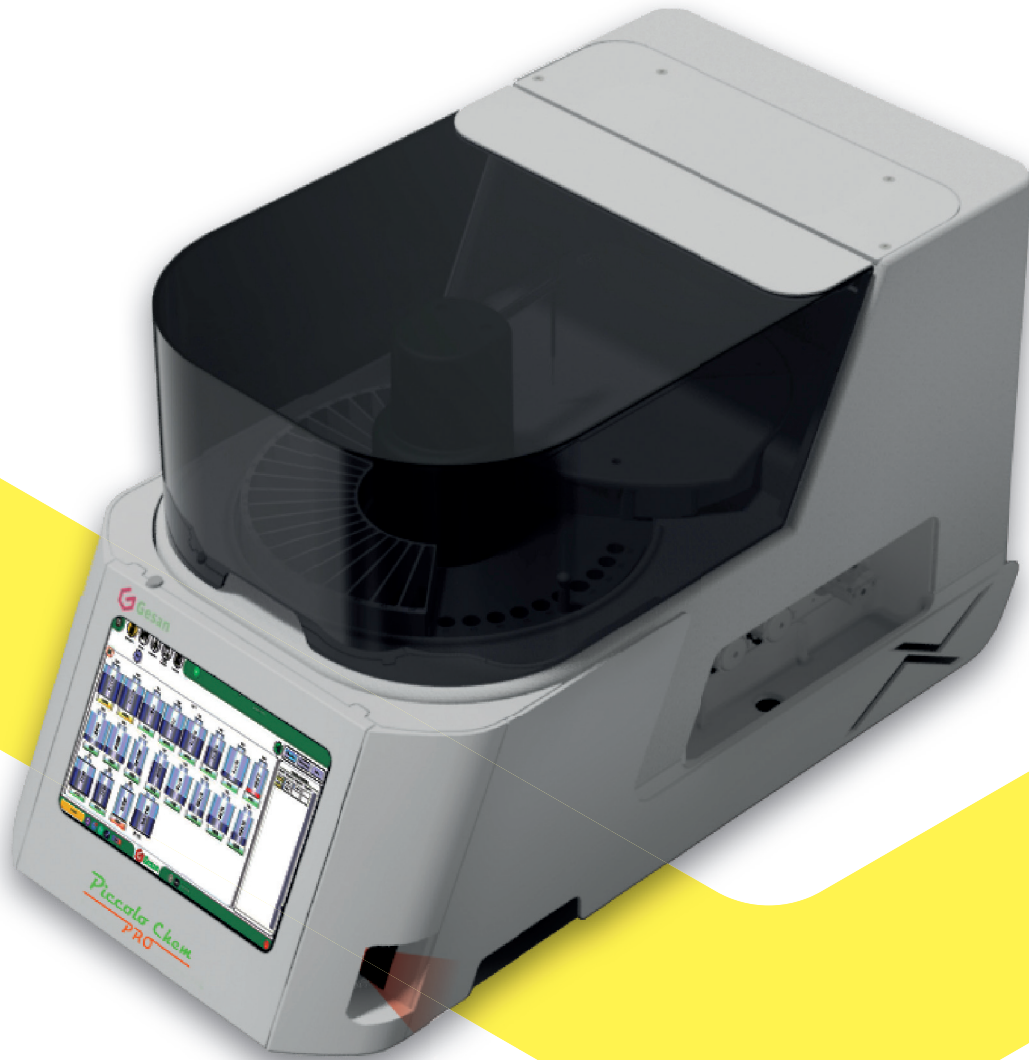




*Piccolo Chem*  
**PRO**



Tablet Onboard  
Barcode reader Onboard  
Closed System with Dedicated Barcoded Reagents

*Small outside big inside*  
Clinical Chemistry Autoanalyzer and **MORE**

**New PRO Family**

Made in Italy



# New **PRO** Family

- 🔗 Colorimetric Reactions
- 🔗 Enzymatic Reactions
- 🔗 Turbilatex Reactions



## Special Tests

- 🔗 FREE CALCIUM
- 🔗 G6PD
- 🔗 HbA1c
- 🔗 Homocysteine
- 🔗 *Coming ...* Calprotectin, Cystatin C and more

### Technical Specifications

**PRO**

System Type	Fully Automatic, Random Access, STAT sample priority	Reaction Cuvettes	4 reaction segments of 24, single use optical cuvettes, total 96
Throughput	Up to 150 tests / hour	Reaction Volume	275 - 500 µl
Analysis Methods	Endpoint (Bichromatic-Differential-Sample blank), Kinetics, Fixed-Time, Turbidimetry	Reaction Time	Up to 11 min
Calibration Curve	Linear, Non Linear, Cubic - Spline, Multi Point, Log - Logit	Reaction Temperature	38°C ± 0.1°C
Sample Type	Serum, Plasma, Urine, CSF	Optical Source	1 halogen lamp (6 V, 10 W) with extended UV emission
Sample Positions	Removable Rack with 10 positions - Optional configuration with 20 sample positions	Optical Range	0 - 3 Abs Linearity ±0.5% from 0.1 to 1.5 Abs
Sample Volume	2 - 300 µl	Optical Path	9.5 mm
Sample Cuvettes	Tubes of 12 - 13 mm, 5 - 7 mL - Sample cups of 1 mL (cups require a metal adapter)	Wavelength	8 interference filters of 340, 405, 505, 546, 578, 600, 650, 700 nm, 1 free position, 1 solid position for dark reading
Sample Dilution	Yes - Automatic by software	Photo - Amplifier	Photoelectric detector, Signal amplifier, response range, 340 nm to 900 nm
Stat Samples	Yes	Diluter Syringe	368 µl capacity, long-life syringe
Sampling Technology	Capacitive Liquid Level Detection	Hydraulic System	2 self-priming peristaltic pumps (life 800 hrs), Pinch Valve
Sample Barcode	Hand barcode reader included	Needle Wash	Internal and external with system solution
Reagent Positions	Removable Rack with 20 Reagent positions - Optional configuration with 10 positions	Run / Reaction Monitor	Operation status monitor on screen
Reagent Volume	2 - 350 µl	Quality Control	Levey - Jennings Graphics - Westgard Algorithm
Reagent Bottles	15 ml and 35 ml	Operator Interface	Included touch screen 10" - Intel HD Graphics 50 windows - 4 GB DDR3 SDRAM - Intel Pentium 1.6 GHz - SSD 64GB
Pipetting Technology	Capacitive Liquid Level Detection	Connections	Ethernet LAN port for LIS host communication, USB port for analyzer connection
Reagent Storage	Cooling for Reagent Rack included	Printer	External Printer
Reagent Barcode	Hand barcode reader included	Environmental	16 - 30 °C, < 80 % humidity
Power Supply	100 - 240 Vac, 50 / 60 Hz, single phase with ground		
Size / Weight	38 x 60 x 40 cm (W x D x H), 19 kg		

Made in Italy  
  
 since 1989

Geslan Production *srl*  
 +39 0924912534  
 overseas@geslanproduction.it  
 www.geslanproduction.it

**CISO**  
 ISO 9001:2015

**CISO**  
 ISO 13485:2016



*Chem 200*  
PRO



Tablet Onboard

Barcode reader Onboard

Closed System with Dedicated Barcoded Reagents

*Clinical Chemistry Autoanalyzer and **MORE***

Small, medium laboratory

Special routine, Back-up in big laboratory

Emergency department

*New **PRO** Family*

Made in Italy



# New **PRO** Family

- ⊕ Colorimetric Reactions
- ⊕ Enzymatic Reactions
- ⊕ Turbidatex Reactions

## ⊕ Special Tests

- ⊕ DOA
- ⊕ TDM
- ⊕ G6PD
- ⊕ Homocysteine
- ⊕ *Coming ...* Calprotectin, Cystatin C and more



Technical Specifications		<b>PRO</b>
System Type	Fully Automatic, Random Access, STAT sample priority	Reaction Cuvettes
Throughput	Up to 200 tests / hour	80 washable BIONEX® cuvettes which allow approximately 20000 tests for a fully loaded rotor
Analysis Methods	Endpoint (Bichromatic-Differential-Sample blank), Kinetics, Fixed-Time, Turbidimetry	Reaction Volume
Calibration Curve	Linear, Non Linear, Cubic - Spline, Multi Point, Log - Logit	210 - 400 µl
Sample Type	Serum, Plasma, Urine, CSF	Reaction Time
Sample Positions	Removable tray, with 60 positions - Optional 20 tubes + 20 Hitachi cups = 40 positions	Up to 11 min
Sample Volume	2 - 300 µl	Reaction Temperature
Sample Cuvettes	Tubes of 12 -13 mm, 5 - 7 ml / cups of 0.5-1.5 ml (require a metal adapter) - optional 20 tubes of 12 - 16 mm / 20 cups (Hitachi type).	38°C ± 0.1°C
Sample Dilution	Yes - Automatic by software	Optical Source
Stat Samples	Yes	1 halogen lamp (6 V, 10 W) with extended UV emission
Sampling Technology	Capacitive Liquid Level Detection, needle shock sensor	Optical Range
Sample Barcode	Internal barcode reader (optional)	0-3 Abs. Linearity ±0.5% from 0.1 to 1.5 Abs
Reagent Positions	Removable Rack with 30 Reagent positions with cooling	Optical Path
Reagent Volume	5 - 350 µl	6 mm
Reagent Bottles	20 ml and 50 ml	Wavelength
Pipetting Technology	Capacitive Liquid Level Detection. needle shock sensor	8 interference filters of 340, 405, 505, 546, 578, 600, 650, 700 nm, 1 free position, 1 solid position for dark reading
Reagent Storage	Cooling for Reagent Rack with independent power supply	Photo - Amplifier
Reagent Barcode	Hand barcode reader included	Photoelectric detector, Signal amplifier, response range, 340 nm to 900 nm
Power Supply	100-240 Vac, 50/60 Hz, single phase with ground	Diluter Syringe
Size / Weight	65 x 65 x 50 cm (W x D x H), 50 kg	368 µl capacity, long-life syringe
		Hydraulic System
		8 self-priming peristaltic pumps (life 800 hrs), 2 vacuum pumps, Pinch Valve
		Wash Station
		Needles: 6 dispensating, 6 aspiration, 1 clearing (8 step washing sequence for each cuvette). Less than 3 l/hour water consumption.
		Needle Wash
		Internal and external with system solution
		Run/Reaction Monitor
		Operation status monitor on screen
		Quality Control
		Levey - Jennings Graphics - Westgard Algorithm
		Operator Interface
		Included touch screen 10"- Intel HD Graphics 50 windows - 4 GB DDR3 SDRAM Intel Pentium 1.6 GHz - SSD 64GB
		Connections
		Ethernet LAN port for LIS host communication, USB port for analyzer connection
		Printer
		External Printer
		Environmental
		16 - 30 °C, < 80 % humidity

Made in Italy  
  
 Since 1989

Gesan Production srl  
 +39 0924912534  
 overseas@gesanproduction.it  
[www.gesanproduction.it](http://www.gesanproduction.it)

  
 ISO 9001:2015

  
 ISO 13485:2016



*Chem 300*  
PRO



Tablet Onboard

Barcode reader Onboard

Closed System with Dedicated Barcoded Reagents

*Clinical Chemistry Autoanalyzer and **MORE***

The choice that goes double  
random access clinical chemistry analyzer

*New **PRO** Family*

Made in Italy



# New **PRO** Family

- 📦 Colorimetric Reactions
- 📦 Enzymatic Reactions
- 📦 Turbidatex Reactions

## Special Tests

- 📦 DOA
- 📦 TDM
- 📦 G6PD
- 📦 Homocysteine
- 📦 *Coming ...* Calprotectin, Cystatin C and more



Technical Specifications		<b>PRO</b>
System Type	Fully Automatic, Random Access, STAT sample priority	Reaction Cuvettes
Throughput	Up to 300 tests / hour	80 washable BIONEX® cuvettes which allow approximately 20000 tests for a fully loaded rotor
Analysis Methods	Endpoint (Bichromatic-Differential-Sample blank), Kinetics, Fixed-Time, Turbidimetry	Reaction Volume
Calibration Curve	Linear, Non Linear, Cubic - Spline, Multi Point, Log - Logit	210 - 400 µl
Sample Type	Serum, Plasma, Urine, CSF	Reaction Time
Sample Positions	Removable tray, with 60 positions - Optional 20 tubes + 20 Hitachi cups = 40 positions	Up to 11 min
Sample Volume	2 - 300 µl	Reaction Temperature
Sample Cuvettes	Tubes of 12 -13 mm, 5 - 7 ml / cups of 0.5-1.5 ml (require a metal adapter) - optional 20 tubes of 12 -16 mm / 20 cups (Hitachi type).	38°C ± 0.1°C
Sample Dilution	Yes - Automatic by software	Optical Source
Stat Samples	Yes	1 halogen lamp (6 V, 10 W) with extended UV emission
Sampling Technology	Capacitive Liquid Level Detection, needle shock sensor	Optical Range
Sample Barcode	Internal barcode reader	0 - 3 Abs Linearity ±0.5% from 0.1 to 1.5 Abs
Reagent Positions	2 Removable and Refrigerated Rack with 30 + 30 = 60 Reagent positions	Optical Path
Reagent Volume	5 - 350 µl	6 mm
Reagent Bottles	20 ml and 50 ml	Wavelength
Pipetting Technology	Capacitive Liquid Level Detection. Needle shock sensor	8 interference filters of 340, 405, 505, 546, 578, 600, 650, 700 nm, 1 free position, 1 solid position for dark reading
Reagent Storage	Cooling for both Reagent Rack with independent power supply	Photo - Amplifier
Reagent Barcode	Hand barcode reader included	Photoelectric detector, Signal amplifier, response range, 340 nm to 900 nm
Power Supply	100 - 240 Vac, 50 / 60 Hz, single phase with ground	Diluter Syringe
Size / Weight	93 x 74 x 60 cm (W x D x H), 75 kg	368 µl capacity, long-life syringe
		Hydraulic System
		8 self-priming peristaltic pumps (life 800 hrs), 2 vacuum pumps Pinch Valve
		Wash Station
		Needles: 5 dispensating, 6 aspiration, 1 clearing (7 step washing sequence for each cuvette). Less than 3 l/hour water consumption.
		Needle Wash
		Internal and external with system solution
		Run / Reaction Monitor
		Operation status monitor on screen
		Quality Control
		Levey - Jennings Graphics - Westgard Algorithm
		Operator Interface
		Included touch screen 10" - Intel HD Graphics 50 windows - 4 GB DDR3 SDRAM Intel Pentium 1.6 GHz - SSD 64GB
		Connections
		Ethernet LAN port for LIS host communication, USB port for analyzer connection
		Printer
		External Printer
		Environmental
		16 - 30 °C, < 80% humidity

Made in Italy  
  
 Since 1989

Gesan Production *srl*  
 +39 0924912534  
 overseas@gesanproduction.it  
[www.gesanproduction.it](http://www.gesanproduction.it)

